

RESUMate 17

Installation Guide

This document provides step-by-step instructions for installing RESUMate 17 and the associated Google Chrome/Microsoft Edge extension on a Windows PC.

Installing RESUMate 17 is a two step process:

- 1) Install the RESUMate 17 program on your PC
- 2) Install the RESUMate Web Profile extension in your browser

Table of Contents

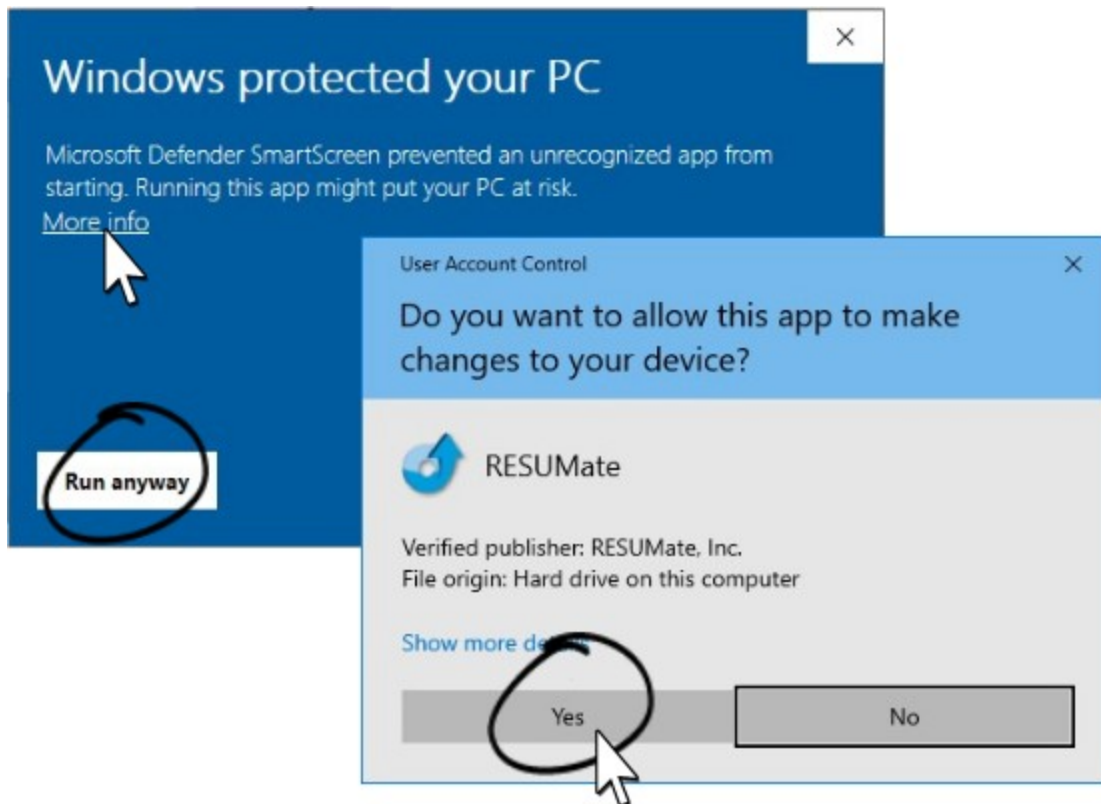
Installing RESUMate 17.....	1
Installing the RESUMate Web Profile Tool.....	2



Step 1: Installing RESUMate 17 on your PC

RESUMate is installed from a file named “resumate-17-setup.msi”. This file can be downloaded from the Support & Downloads page of our website: <https://resumate.com/support/>. If you received this document as an attachment, there is also a download link in the email.

Once the install file is downloaded to your PC, run it by double clicking. If you are installing for more than one user, you will need to run the installer on all PCs where RESUMate will be used. Depending on your Windows or third party security settings, you may see a warning like this:



If you see a “Windows protected your PC” message, click “**More info**” followed by “**Run Anyway**”.

When the “User Account Control” message appears, click “**Yes**” to allow the program to “make changes”. Make sure that the “Verified publisher” is listed as “RESUMate, Inc.”.

From there the installation will proceed automatically. Depending on your system, the installer may ask to restart your PC when finished.

Once the installation is complete, you’ll have **RESUMate 17** as an “app” in your Windows start menu/search box, and the RESUMate icon will appear on your taskbar when RESUMate is open. You can right click the taskbar icon to “pin” the program.

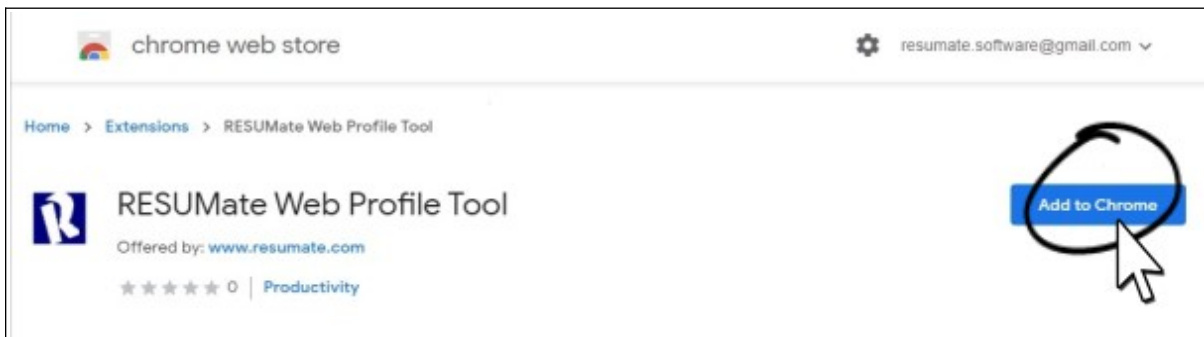
Step 2: Installing the RESUMate Web Profile Extension

RESUMate uses a browser “extension” compatible with Google Chrome and Microsoft Edge to copy LinkedIn profiles to the Windows Clipboard. To use the LinkedIn importer, you must install this extension.

To install the RESUMate Web Profile extension, visit the Chrome Web Store (in Chrome or Edge) and search for “RESUMate” or just click this link:

<https://chromewebstore.google.com/detail/resumate-web-profile-tool/kpenochakingoeeglgellbdpgdigjpem>

[If you got this document as an attachment, the email contains the link as well.]

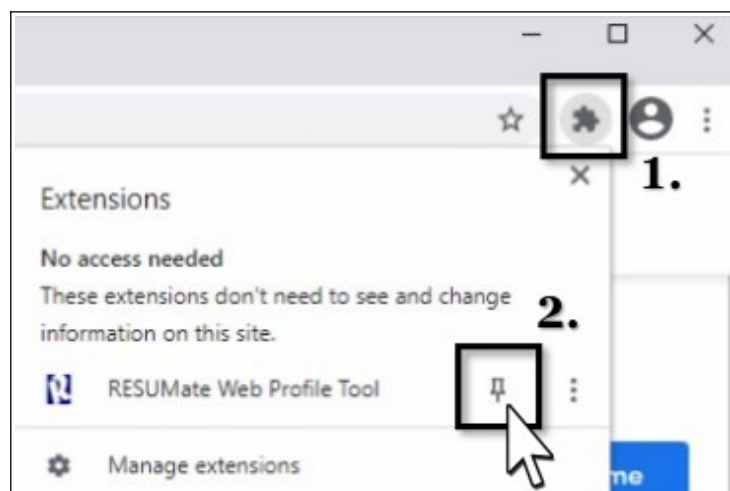


From the RESUMate Web Profile Tool page in the Chrome Store, just click “**Add to Chrome**”.

Microsoft Edge Users: You may see a blue banner at the top of the page asking to “Allow extensions from other stores”. Click to “**Allow**”.

NOTE: You do NOT need to set Chrome or Edge as your default browser to use RESUMate 17 or the LinkedIn profile importer. You can continue to use another browser for most tasks. However, to import profiles from LinkedIn, you will need to visit LinkedIn in either Edge or Chrome.

If you want to “pin” the extension so that it’s always visible on your browser, click the “puzzle piece” icon in the upper right of your browser, then click to “pin” (Chrome) or “show” (Edge) the RESUMate extension:



Click the blue “R” icon in your browser will automatically copy any LinkedIn profile for importing to RESUMate.